



Venue Hire

A unique and alternative setting for your private and corporate events, within a centre for creativity in the heart of Dublin.

Temple Bar Gallery + Studios is a leading artist studio complex and contemporary art gallery in Dublin City Centre.

A BRIEF HISTORY

Temple Bar Gallery + Studios (TBG+S) was established by artists in 1983 in response to the increasing demands for affordable studio spaces in Dublin City Centre - a move which proved to be crucial in consolidating Temple Bar's status as Dublin's Cultural Quarter.

In the mid-nineties, the innovative Irish architecture practice, McCullough Mulvin Architects custom designed the new gallery and studio complex building which integrates a gallery with on-street access, an impressive atrium space and thirty artist studios.

Today, TBG+S is a thriving artists' community and centre for creativity in the capital, instrumental in nurturing the development of artists and forging pathways for the practices.

OUR MISSION

Our mission is to support the development of artists and the creation of art, through high quality studio provision and an ambitious exhibition programme.

We support an inclusive environment of learning and creativity and nurture close and sustained engagement of audiences with the work of Irish and international artists.

By choosing to hire a space at Temple Bar Gallery + Studios, you are helping us to support artists and bring creativity to our community.



Located in the heart of Dublin's Cultural Quarter, Temple Bar Gallery + Studios offers unique and alternative spaces for your private and corporate events.

Whether it's a launch, workshop, film screening, meeting, photo shoot, class, conference or performance, we would be delighted to discuss your event ideas and arrange a tour.

Our distinctive spaces can accommodate events ranging anywhere from 2 to 250 guests, and are sure to create a memorable event.

Our spaces available for venue hire include:

- Studio 6
- Atrium
- Top Floor Atrium + Rooftop Balcony

We look forward to welcoming you and your guests to Temple Bar Gallery + Studios.



STUDIO 6

Studio 6 is a spacious, minimal and versatile white space.

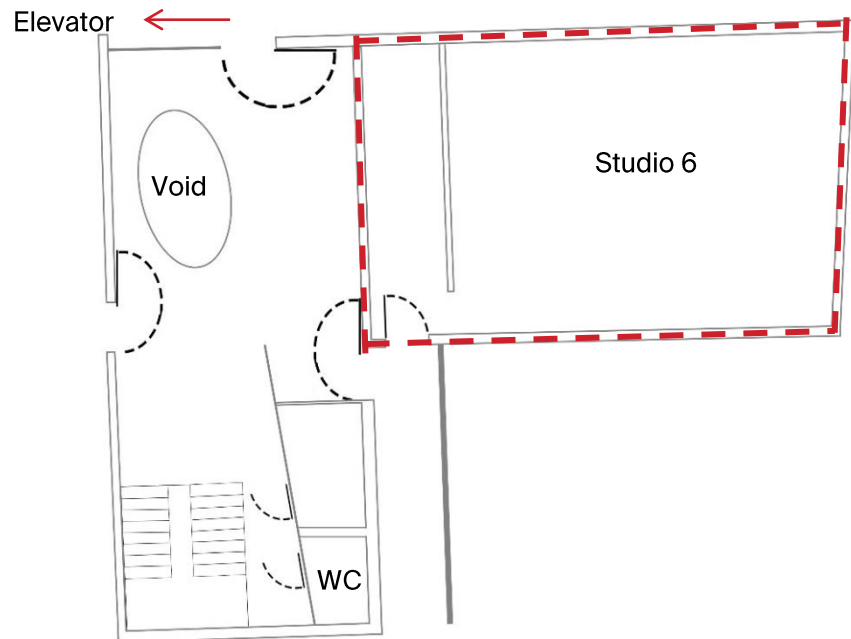
Studio 6 is ideal for launches, seminars, meetings, conferences, creative workshops, talks, lectures, performances, rehearsals, screenings and much more.

The space is equipped with a storage area, sink and floor to ceiling windows.

CAPACITY: 60 seated / 75 standing

DIMENSIONS: 6.8 x 10.7 metres approx.

AREA: 72.8 metres squared



Floorplan





ATRIUM

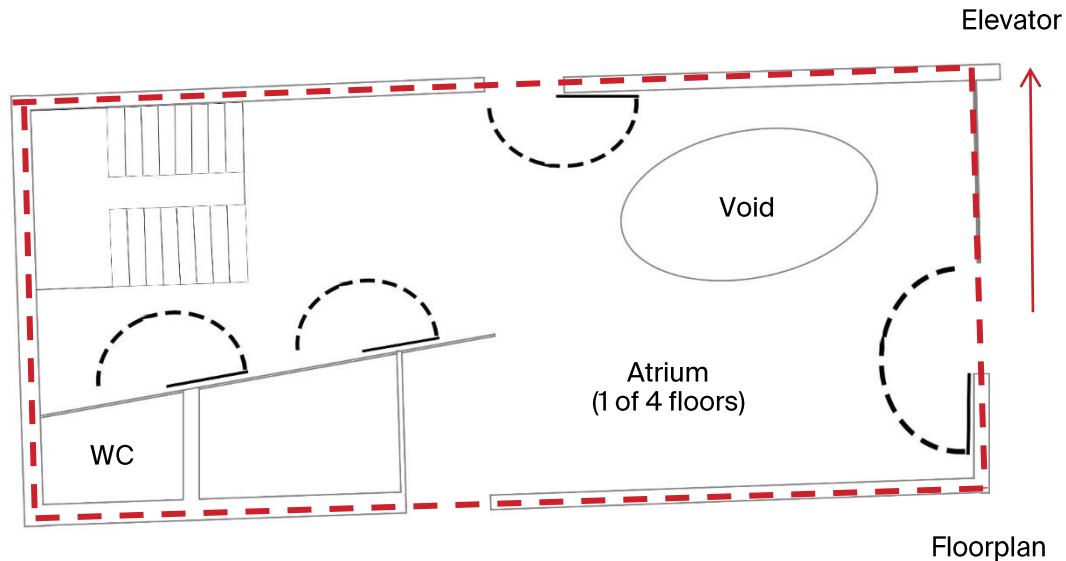
The impressive Atrium spans across the four floors of the TBG+S building.

Natural light streams in from the glass roof and adjoining balcony. With plenty of wall space and concrete floors, it is the perfect canvas for you to create your event, and the unique oval void feature is sure to add an extra wow-factor.

CAPACITY: Approx. 40 standing per floor

DIMENSIONS: 15.6 x 5.2 metres approx.

AREA: 81.1 metres squared approx. (Less floor space for stairwell and central void)







TOP FLOOR ATRIUM + ROOFTOP BALCONY

An urban oasis in the heart of Temple Bar.

The Rooftop Balcony adjoins the top floor Atrium with views of Dublin City Centre and The Spire. Hiring these spaces together creates the perfect venue for a launch or brand experience.

TOP FLOOR ATRIUM

CAPACITY: Approx. 40 standing

DIMENSIONS: 15.6 x 5.2 metres approx.

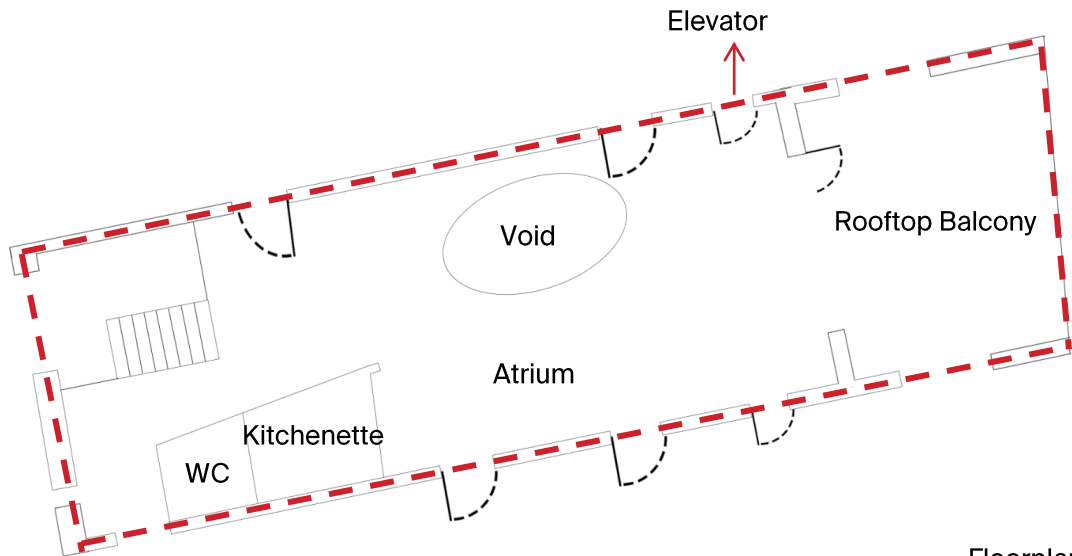
AREA: 81.1 metres squared approx. (Less floor space for stairwell and central void)

ROOFTOP BALCONY

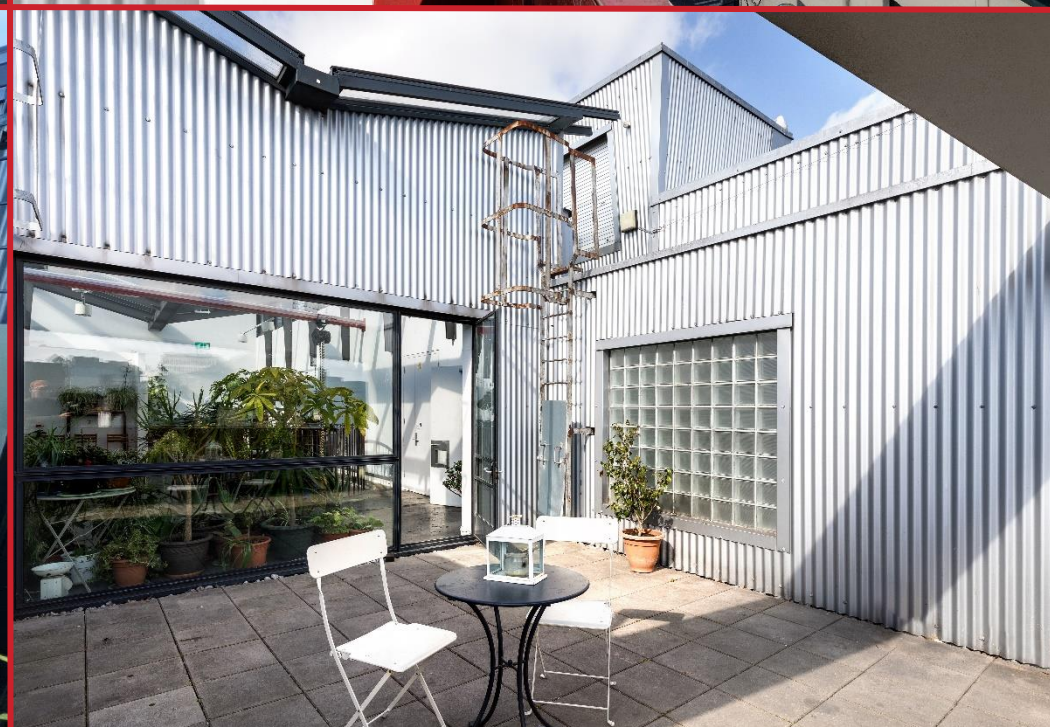
CAPACITY: 30 standing

DIMENSIONS: 5.5 x 5.5 metres approx.

AREA: 30.25 metres squared



Floorplan



GETTING HERE

Temple Bar Gallery + Studios is easily accessible on foot and by public transport.

ON FOOT

The gallery is less than a minute walk from the Ha'penny Bridge and a 6 minute walk from O'Connell St and Trinity College Dublin.

BY DART COMMUTER RAIL

Tara Street DART station is a 10 minute walk from the Gallery.

BY LUAS

If travelling via the LUAS Green Line, alight at Westmoreland. The Gallery is a 5 minute walk from here. If travelling via the Red Line, alight at Jervis, which is a 5 minute walk from the Gallery.

BY BUS

Dublin Bus provides service to nearby bus stops. The closest stops are: Ha'penny Bridge, Wellington Quay, Dame Street, Central Bank, Bachelors Walk. Bus routes serving the Gallery include the following: 660, 761 and 763 to Crampton Quays, 54a to College Green and the 14, 15, 15A, 15B, 15D, 140, and 142 to Dame Street. We are a 15 minute walk from Busáras.

BY DUBLIN BIKES

Dublinbikes is a public bicycle rental scheme. There is a Dublinbike station on Fownes Street Upper, a 2 minute walk from the Gallery.

BY CAR

There is a Park Rite car park at 52-57 Fleet St, which is a 3 minute walk from the Gallery.



EQUIPMENT HIRE

Item	Cost
Projector	€40
Flat Screen TV Monitor	€40
Speakers	€30
Wine Glasses [max. 60]	€0.50 each
Tall Glasses [max. 50]	€0.50 each
Teacups and Saucers [max. 20]	€0.50 each
Portable Whiteboard / Flipchart	€5
Chairs [max. 40]	Free of charge
Large Benches [max. 2 - seats 5 each]	Free of charge
Small Benches [max. 4 - seats 3 each]	Free of charge
Trestle Tables [max. 4]	Free of charge
Blackout Blinds [Studio 6 only]	Free of charge
Speakers Podium	Free of charge
Coat Rails [max. 2] with Hangers	Free of charge

CATERING OPTIONS

KC PEACHES CAFE & CATERING

54 Dame Street,
Dublin 2
+353 1 645 5307
damestreet@kcpeaches.com
www.kcpeaches.com

LUNCHEONETTE

Dublin City Gallery The Hugh Lane,
Parnell Square N,
Rotunda,
Dublin 1
luncheonettedublin@gmail.com
www.luncheonettedublin.com

CAKE CAFÉ

The Daintree Building,
Pleasants Place,
Dublin 8
+353 1 4789394
info@thecakecafe.ie
www.thecakecafe.ie



Get in touch for booking enquiries and to organise a viewing.

For booking enquiries and viewings please contact:
info@templebargallery.com
+353 (0)1 6710073

Office Opening Hours:
Monday to Friday, 10am - 6pm

Temple Bar Gallery + Studios
5-9 Temple Bar
Dublin 2, Ireland
D02 AC84

www.templebargallery.com

We look forward to hearing from you!

FOR ART IS FOR EVERYBODY